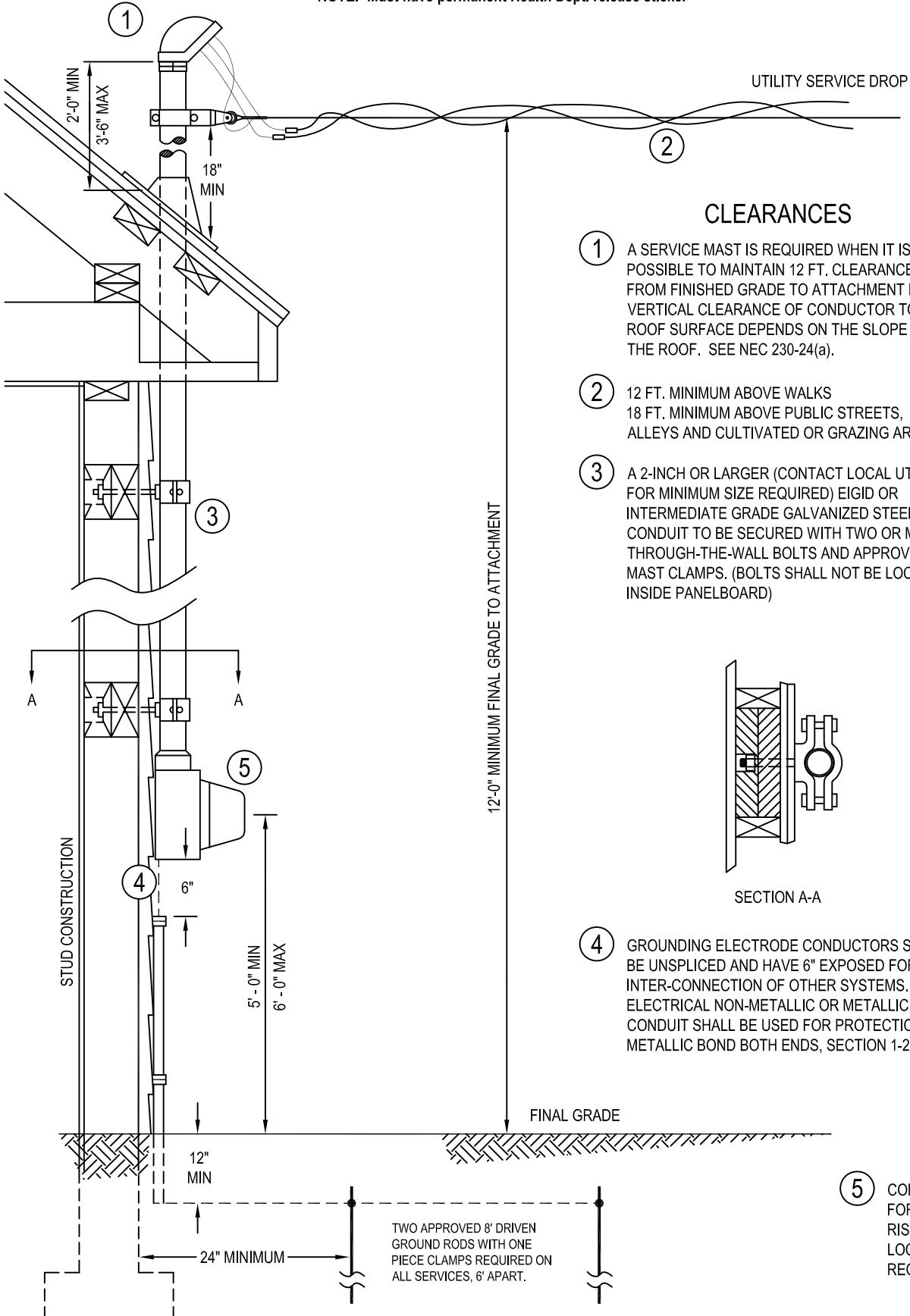


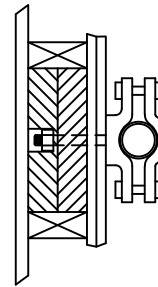
NOTE: Must have permanent Health Dept. release sticker



UTILITY SERVICE DROP

CLEARANCES

- ① A SERVICE MAST IS REQUIRED WHEN IT IS NOT POSSIBLE TO MAINTAIN 12 FT. CLEARANCE FROM FINISHED GRADE TO ATTACHMENT POINT. VERTICAL CLEARANCE OF CONDUCTOR TO ROOF SURFACE DEPENDS ON THE SLOPE OF THE ROOF. SEE NEC 230-24(a).
- ② 12 FT. MINIMUM ABOVE WALKS
18 FT. MINIMUM ABOVE PUBLIC STREETS, ALLEYS AND CULTIVATED OR GRAZING AREAS.
- ③ A 2-INCH OR LARGER (CONTACT LOCAL UTILITY FOR MINIMUM SIZE REQUIRED) EIGID OR INTERMEDIATE GRADE GALVANIZED STEEL CONDUIT TO BE SECURED WITH TWO OR MORE, THROUGH-THE-WALL BOLTS AND APPROVED MAST CLAMPS. (BOLTS SHALL NOT BE LOCATED INSIDE PANELBOARD)



SECTION A-A

- ④ GROUNDING ELECTRODE CONDUCTORS SHALL BE UNSPLICED AND HAVE 6" EXPOSED FOR THE INTER-CONNECTION OF OTHER SYSTEMS. ELECTRICAL NON-METALLIC OR METALLIC CONDUIT SHALL BE USED FOR PROTECTION (IF METALLIC BOND BOTH ENDS, SECTION 1-2 & 3)

- ⑤ CONTACT LOCAL UTILITY FOR METERBASE AND RISER/WEATHERHEAD LOCATION AND BY-PASS REQUIREMENT

12'-0" MINIMUM FINAL GRADE TO ATTACHMENT

FINAL GRADE

TWO APPROVED 8" DRIVEN GROUND RODS WITH ONE PIECE CLAMPS REQUIRED ON ALL SERVICES, 6' APART.

24" MINIMUM

5'-0" MIN
6'-0" MAX

12" MIN

2'-0" MIN
3'-6" MAX
18" MIN

STUD CONSTRUCTION

A A

①

②

③

⑤

④