



200 Electric Avenue Somerset, KY 42501

P (606)-678-4121

New Traditional Construction Home Electrical Service Steps for Members

Step 1: Contact Lake Cumberland Health Department to obtain correct septic permit releases. Visit <https://www.lcdhd.org> for details.

Step 2: Contact South Kentucky Rural Electric Cooperative Corporation (SKRECC) at 1-606-678-4121 to apply for new service.

- SKRECC Engineering Department will set up a time to review the new site to determine if any line extension or pole charges apply.
- SKRECC will allow up to 1000ft for traditionally constructed homes on a permanent foundation including double wide mobile homes at no line extension cost to the member.
- SKRECC will allow up to 300ft to single-wide mobile homes, RV sites, non-traditional built homes, barns, garages and other similar structures. Subject to the Notes below:
 - Overhead Line Charges beyond what SKRECC allows will be \$5.50/ft.
 - Underground line charges beyond what SKRECC allows will be \$4.75/ft.

Note 1: Member will be responsible for conduit and construction of the ditch to meet SKRECC specifications in all underground service applications.

Note 2: All line extension fees and pole fees if applicable must be paid to SKRECC prior to commencement of activities to provide electrical service.

Note 3: All temporary power for construction shall be billed at SKRECC's Small Commercial Rate contained as Schedule B in SKRECC's published tariff.

If home will need temporary power for construction use steps 3-5

Step 3: Temporary power shall be for construction only. Contact a local licensed electrician to install a temporary power pole, if using a home-owner permit please follow SKRECC guidelines for temporary power poles, attached to this procedure.

Step 4: Subject to the Note below, call your local licensed electrical inspector to have the temporary power pole inspected, please see list provided with this procedure.

Note 4: The release for temporary power sticker from Lake Cumberland Health Department must be in the temporary panel before inspection.

Step 5: Bring in the certificate from the passed temporary inspection to your local SKRECC office.

- SKRECC will send out a staking engineer to draw up appropriate specifications for the job.
- SKRECC will send out a construction team to build the job.

If home will not need temporary power for construction

Note 5: Once the home is framed up and wired the member will need to call the local licensed electrical inspector to perform a rough-in inspection.

Note 6: A rough-in inspection is not when SKRECC will pull wire to the home, this is achieved after a yellow sticker “Service Inspection”, performed after the interior walls are covered, panel box is wired, and service meter base is installed.

Step 6: If the service to the home is going to have an underground service, dig the ditch and construct it for service per SKRECC specifications provided in this procedure. Once the ditch is constructed call SKRECC to set up a ditch inspection.

- SKRECC will send out a staking engineer to inspect the ditch.

Note 7: If the service is overhead, construct the service to meet SKRECC specifications provided with this procedure and proceed to step 7.

Step 7: Contact your local licensed electrical inspector to set up a service inspection “Yellow Sticker”. The service sticker is good for 60 days and should be used to prepare for the final inspection.

Note 8: The release for permanent power sticker from Lake Cumberland Health Department must be in the panel prior to inspection.

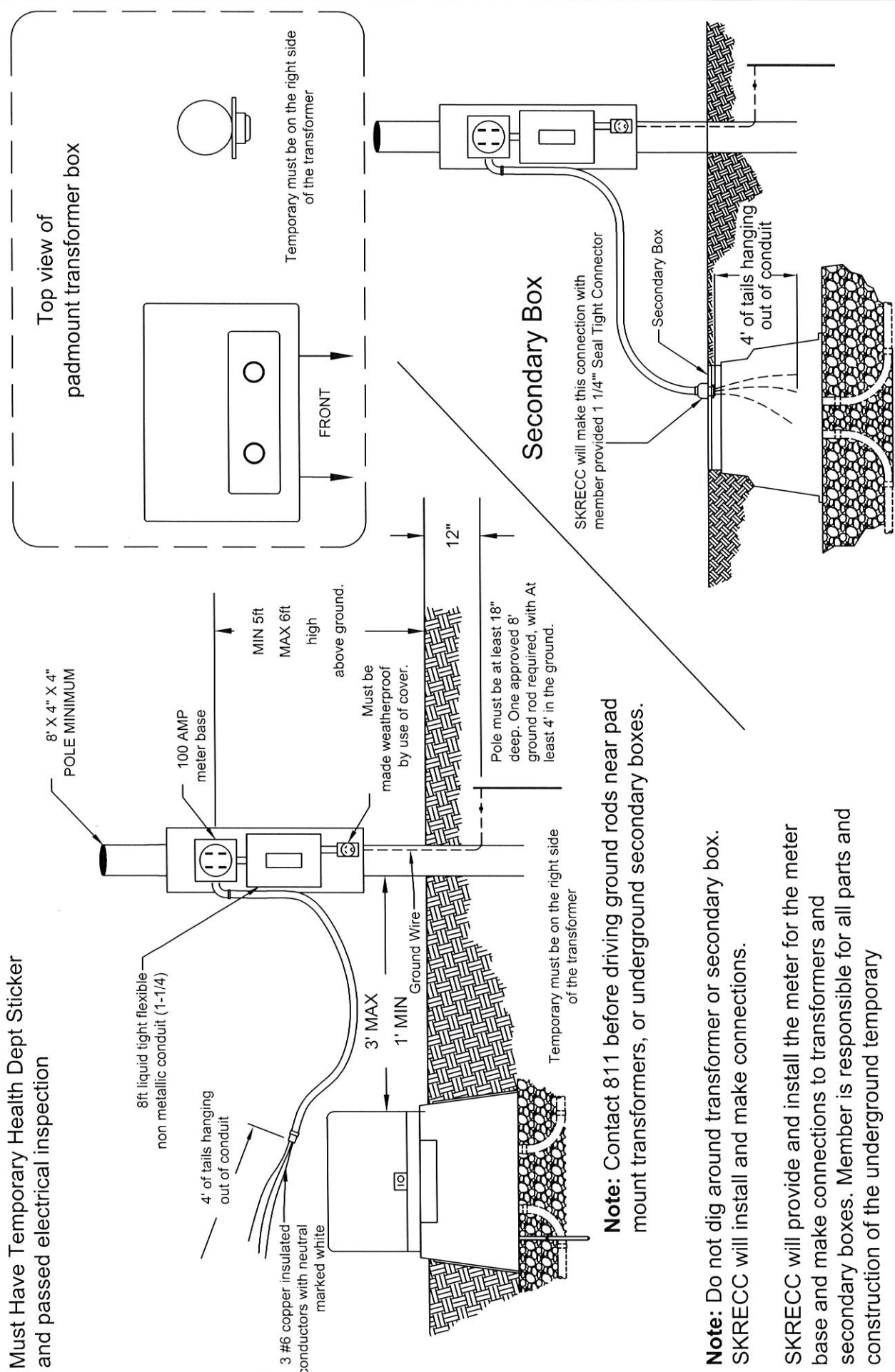
Note 9: Interior walls should be covered, panel box wired, and meter base constructed prior to SKRECC pulling in permanent service wire.

Step 8: Bring the approved yellow sticker certificate to your local SKRECC office and apply for permanent service.

- SKRECC will send a staking engineer to draw up appropriate specifications for the job.
- SKRECC will send a construction team to build the job.

Step 9: Contact your local licensed electrical inspector to perform a final inspection, "Green Sticker or release for occupancy." Bring a copy of the certificate of compliance to SKRECC to change electric rate from Small Commercial Rate to Residential, Farm and Non-Farm Service under Schedule A of SKRECC's published tariff.

Must Have Temporary Health Dept Sticker and passed electrical inspection



Note: Contact 811 before driving ground rods near pad mount transformers, or underground secondary boxes.

Note: Do not dig around transformer or secondary box. SKRECC will install and make connections.

SKRECC will provide and install the meter for the meter base and make connections to transformers and secondary boxes. Member is responsible for all parts and construction of the underground temporary

	TEMPORARY UNDERGROUND SERVICE POLICY & SPECIFICATIONS		DATE 03/12/2024	DWG NO TUS-1	REV 4

Underground Temporary Service

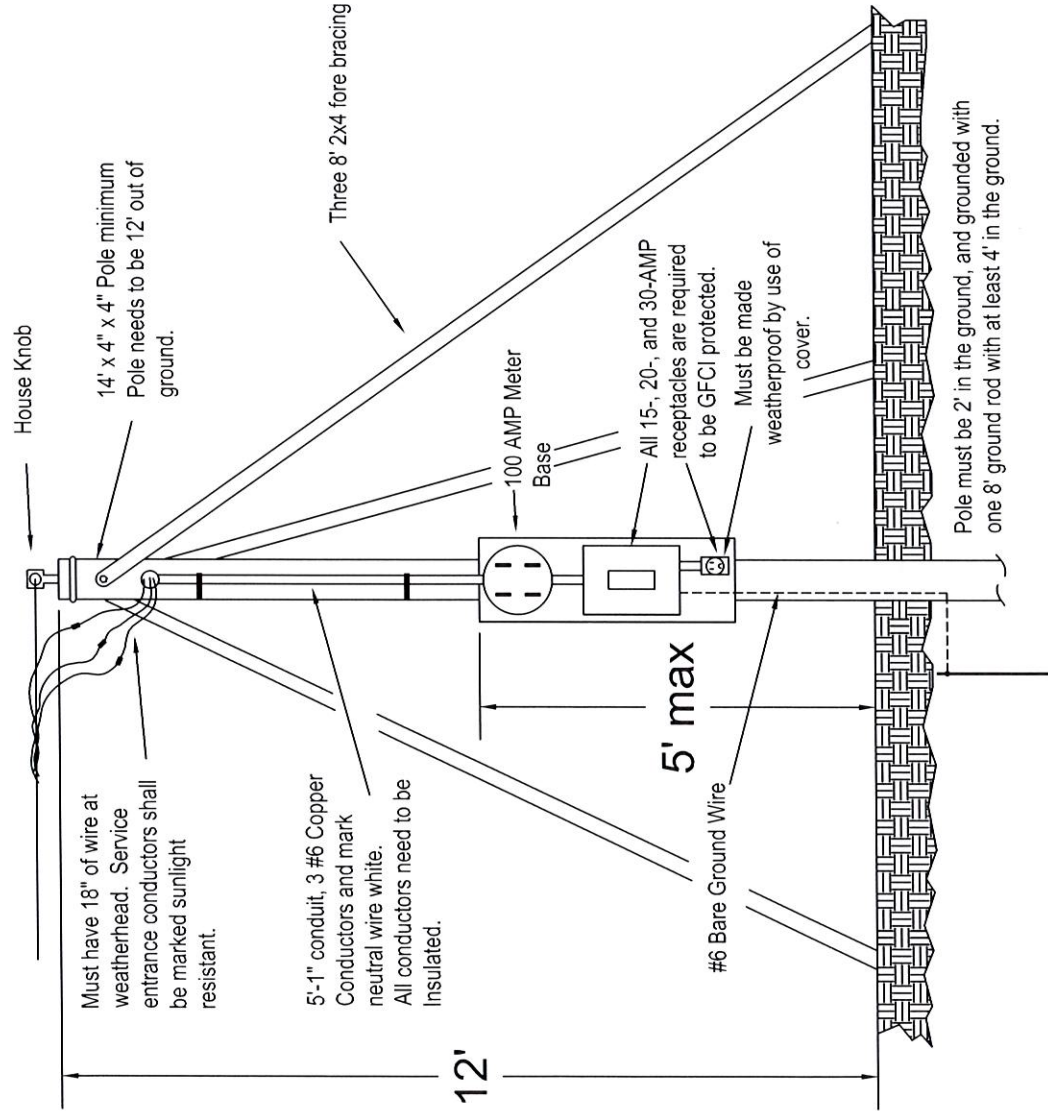
Responsibilities

1. Members are responsible for all costs associated with the temporary service.
2. Members ensure the temporary service complies with the NEC and SKRECC Specs.
3. Members must have the temporary power release sticker from the health department in the temporary panel.
4. Members must have a passed electrical inspection sticker from a licensed electrical inspector. See list of licensed electrical inspectors provided with this procedure.
5. SKRECC will provide the meter and install it in the members meter base and make connections to the pad mount transformer or secondary pull box.

SKRECC Underground Temporary Service Requirements

6. Underground temporary service poles should be constructed on an 8-foot 4x4 post.
7. At least 3 feet of the post should be buried in the ground.
8. Minimum 5 feet above ground to meter base and maximum of 6 feet.
9. The overhead temporary must be grounded with one 8-foot ground rod attached with a continuous run of bare #6 copper wire from the ground rod back to the temporary panels grounding lug. The ground rod must be driven at least 4 feet in the ground and located within 1 foot of the temporary panel. Call 811 prior to digging or driving ground.
10. The underground temporary shall be located on the right-hand side of the Pad Mount transformer, at a minimum of 1 foot and a maximum of 3 feet from the pad mount transformer or secondary pull box where it is being served from.
11. All 15-, 20-, and 30-amp receptacles are required to be GFCI protected.
12. The underground temporary shall have 3-#6 copper conductors and the neutral conductor shall be marked white with 4 feet of wire hanging out of the conduit on utility connection end.
13. The underground temporary shall have 8 feet of liquid tight flexible non-metallic conduit sized 1-¼ inch, equipped with a 1-¼ inch seal tight connector on utility end of conduit.
14. All receptacles shall be made weatherproof by bubble covers or other acceptable means.
15. The members must tell SKRECC the final service size for the building being constructed 200A/400A etc.
16. Small Commercial power rates apply to all temporary services under Schedule A of SKRECC's published tariff.
17. See specification drawing TUS-1 for additional installation details.

Must have temporary health department release sticker and passed electrical inspection.



Locate no further than 15 feet from SKRECC pole that will supply the temporary.

SKRECC will provide the service drop, make connections, and install the meter. The member is responsible for all other parts and construction of the overhead temporary per SKRECC specs.

NOTE: Call 811 before digging or driving ground rods near utilities

	TEMPORARY OVERHEAD SERVICE POLICY & SPECIFICATIONS		DWG NO	REV
			03/12/2024	TSP-1 5

Temporary overhead service

Responsibilities

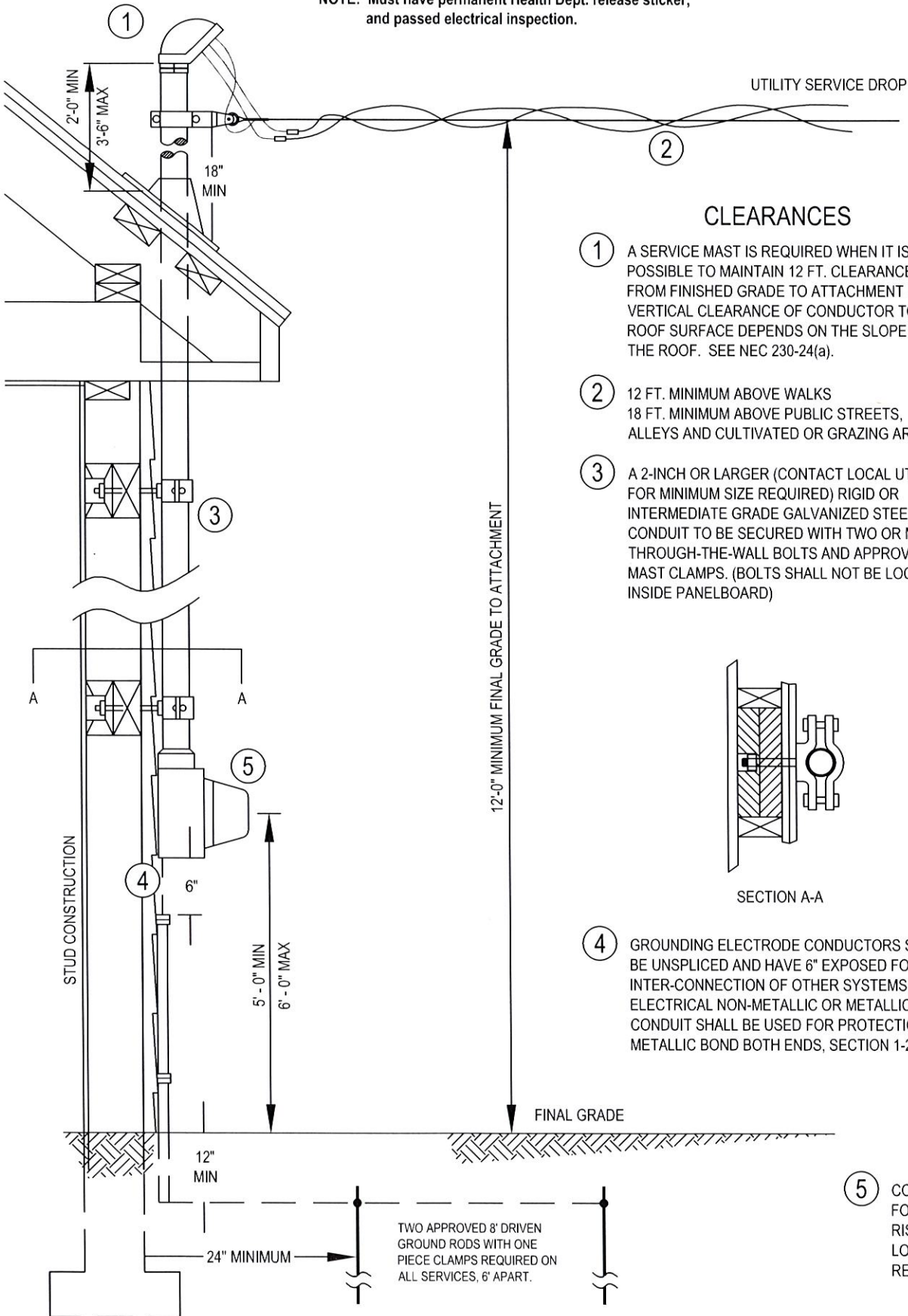
1. Members are responsible for all costs associated with the temporary service.
2. Members ensure the temporary service complies with the NEC and SKRECC Specs.
3. Members must have the temporary power release sticker from the health department in the temporary panel.
4. Members must have a passed electrical inspection sticker from a licensed electrical inspector. See list of licensed electrical inspectors provided with this procedure.
5. SKRECC will provide the meter and install it in the members meter base and provide the service drop and make connections to the temporary overhead service located at a maximum distance of 15 feet from the SKRECC pole in which it will be serviced from.

SKRECC Overhead Temporary Service Requirements

6. Overhead temporary service must be constructed on a 14-foot 4x4 post.
7. At least 2 feet of the post must be buried in the ground.
8. The top of the pole must have a "house pin" on it for SKRECC to connect their service drop.
9. The connection point for the service wire to the overhead temporary must have a minimum vertical clearance of 12 feet from the ground.
10. The overhead temporary service must be braced with a minimum of 3-8-foot 2x4's separated 120 degrees apart. See specification drawing TPS-1 for additional details.
11. The overhead temporary must be grounded with one 8-foot ground rod attached with a continuous run of bare #6 copper wire from the ground rod back to the temporary panels grounding lug. The ground rod must be driven at least 4 feet in the ground and located within 1 foot of the temporary panel. Call 811 prior to digging or driving ground.
12. The overhead temporary shall be located no more than 15 feet from the utility pole where it is being served from.
13. All 15-, 20-, and 30-amp receptacles are required to be GFCI protected.
14. The overhead temporary must have 18 inches of wire at the weather head, service entrance conductors shall be marked sunlight resistant.
15. Conduit shall be at least 5'-1" out of the top of the meter base.
16. The temporary shall have 3-#6 copper conductors and the neutral conductor shall be marked white.
17. All receptacles shall be made weatherproof by bubble covers or other acceptable means.
18. The members must tell SKRECC the final service size for the building being constructed 200A/400A etc.
19. Small Commercial power rates apply to all temporary services under Schedule A of SKRECC's published tariff.
20. See specification drawing TPS-1 for additional installation details.

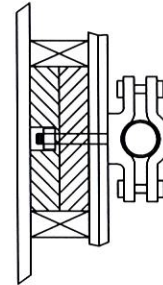


NOTE: Must have permanent Health Dept. release sticker, and passed electrical inspection.



CLEARANCES

- ① A SERVICE MAST IS REQUIRED WHEN IT IS NOT POSSIBLE TO MAINTAIN 12 FT. CLEARANCE FROM FINISHED GRADE TO ATTACHMENT POINT. VERTICAL CLEARANCE OF CONDUCTOR TO ROOF SURFACE DEPENDS ON THE SLOPE OF THE ROOF. SEE NEC 230-24(a).
- ② 12 FT. MINIMUM ABOVE WALKS
18 FT. MINIMUM ABOVE PUBLIC STREETS, ALLEYS AND CULTIVATED OR GRAZING AREAS.
- ③ A 2-INCH OR LARGER (CONTACT LOCAL UTILITY FOR MINIMUM SIZE REQUIRED) RIGID OR INTERMEDIATE GRADE GALVANIZED STEEL CONDUIT TO BE SECURED WITH TWO OR MORE, THROUGH-THE-WALL BOLTS AND APPROVED MAST CLAMPS. (BOLTS SHALL NOT BE LOCATED INSIDE PANELBOARD)



SECTION A-A

- ④ GROUNDING ELECTRODE CONDUCTORS SHALL BE UNSPLICED AND HAVE 6" EXPOSED FOR THE INTER-CONNECTION OF OTHER SYSTEMS. ELECTRICAL NON-METALLIC OR METALLIC CONDUIT SHALL BE USED FOR PROTECTION (IF METALLIC BOND BOTH ENDS, SECTION 1-2 & 3)

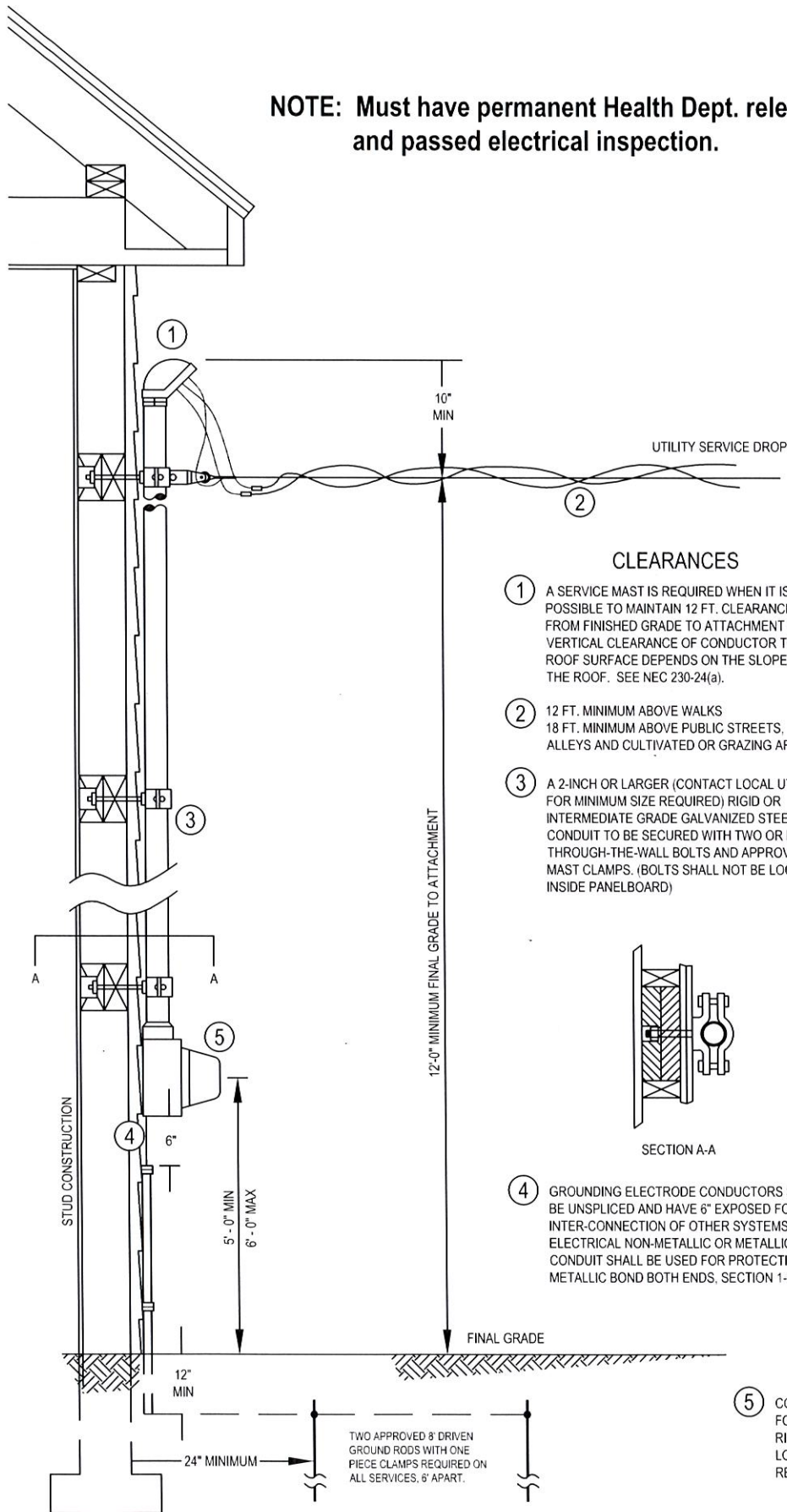
- ⑤ CONTACT LOCAL UTILITY FOR METERBASE AND RISER/WEATHERHEAD LOCATION AND BY-PASS REQUIREMENT

Residential Service Overhead (Through Roof)

- 1) The member is responsible for all costs associated with the construction and material for the meter base and service mask.
- 2) SKRECC will attach a service drop to the service mask, make connections to members wire outside the weather head and install a SKRECC meter in the meter base.
- 3) Meter base must be on an exterior wall of the home and easily accessible.
- 4) The meter base must be mounted securely to the home at a height of 5 feet minimum and 6 feet max from ground level to meter socket.
- 5) The meter base must be grounded with two 8-foot ground rods connected with a continuous # 6 bare copper wire back to the meter grounding lug for 200AMP services. Note: use #4 bare Copper for 400AMP services.
- 6) Six inches of grounding conductor must be exposed below the meter base with a utility grounding block attached for use of the TV/Phone companies to ground too. The remainder of the grounding conductor must be enclosed in ½ inch schedule 80 conduit for protection to ground level. The schedule 80 conduit must be fastened to the exterior of the home with a minimum of two ½ inch approved straps.
- 7) The service mask must be constructed of 2-inch RMC or IMC at minimum for 200Amp. Size conduit and wire accordingly with NEC for larger services.
- 8) The service mask conduit must be secured with a minimum of two through-the-wall bolts for every 10 feet section. The first through-the-wall bolt must be located within 12 inches from the meter base and the second through-the-wall bolt must be located within 12 inches from the point where the conduit penetrates the soffit.
- 9) The service clamp must be located 10 inches below the weather head.
- 10) The minimum clearance from the service clamp to ground level must be 12 feet.
- 11) The conduit shall extend beyond the roof with a vertical minimum clearance of 2 feet and vertical maximum clearance of 3 feet 6 inches.
- 12) The service clamp must have a minimum vertical clearance of 18 inches from the roof line.
- 13) Three insulated conductors sized in accordance with the NEC required service size, and must have 24 inches hanging out of the weather head with the neutral conductor identifiable by white tape or other manufacturer markings.
- 14) Must have a passed yellow sticker, service inspection, from a licensed electrical inspector. Service stickers are good for 60 days to prepare for a final inspection.
- 15) The member is responsible for contacting a licensed electrical inspector approved for their area to set up a final inspection, the certificate of compliance must be brought to your local SKRECC office to change from Small Commercial rate to Residential, Farm and Non-Farm Service under Schedule A of SKRECC's published tariff.
- 16) See specification drawing RSO-1 for additional installation details.

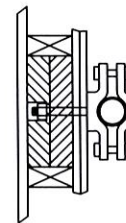
Note: Must have a passed service inspection from a licensed electrical inspector and permanent power release from the health department.

NOTE: Must have permanent Health Dept. release sticker, and passed electrical inspection.



CLEARANCES

- ① A SERVICE MAST IS REQUIRED WHEN IT IS NOT POSSIBLE TO MAINTAIN 12 FT. CLEARANCE FROM FINISHED GRADE TO ATTACHMENT POINT. VERTICAL CLEARANCE OF CONDUCTOR TO ROOF SURFACE DEPENDS ON THE SLOPE OF THE ROOF. SEE NEC 230-24(a).
- ② 12 FT. MINIMUM ABOVE WALKS
18 FT. MINIMUM ABOVE PUBLIC STREETS, ALLEYS AND CULTIVATED OR GRAZING AREAS.
- ③ A 2-INCH OR LARGER (CONTACT LOCAL UTILITY FOR MINIMUM SIZE REQUIRED) RIGID OR INTERMEDIATE GRADE GALVANIZED STEEL CONDUIT TO BE SECURED WITH TWO OR MORE, THROUGH-THE-WALL BOLTS AND APPROVED MAST CLAMPS. (BOLTS SHALL NOT BE LOCATED INSIDE PANELBOARD)



SECTION A-A

- ④ GROUNDING ELECTRODE CONDUCTORS SHALL BE UNSPLICED AND HAVE 6" EXPOSED FOR THE INTER-CONNECTION OF OTHER SYSTEMS. ELECTRICAL NON-METALLIC OR METALLIC CONDUIT SHALL BE USED FOR PROTECTION (IF METALLIC BOND BOTH ENDS, SECTION 1-2 & 3)

- ⑤ CONTACT LOCAL UTILITY FOR METERBASE AND RISER/WEATHERHEAD LOCATION AND BY-PASS REQUIREMENT

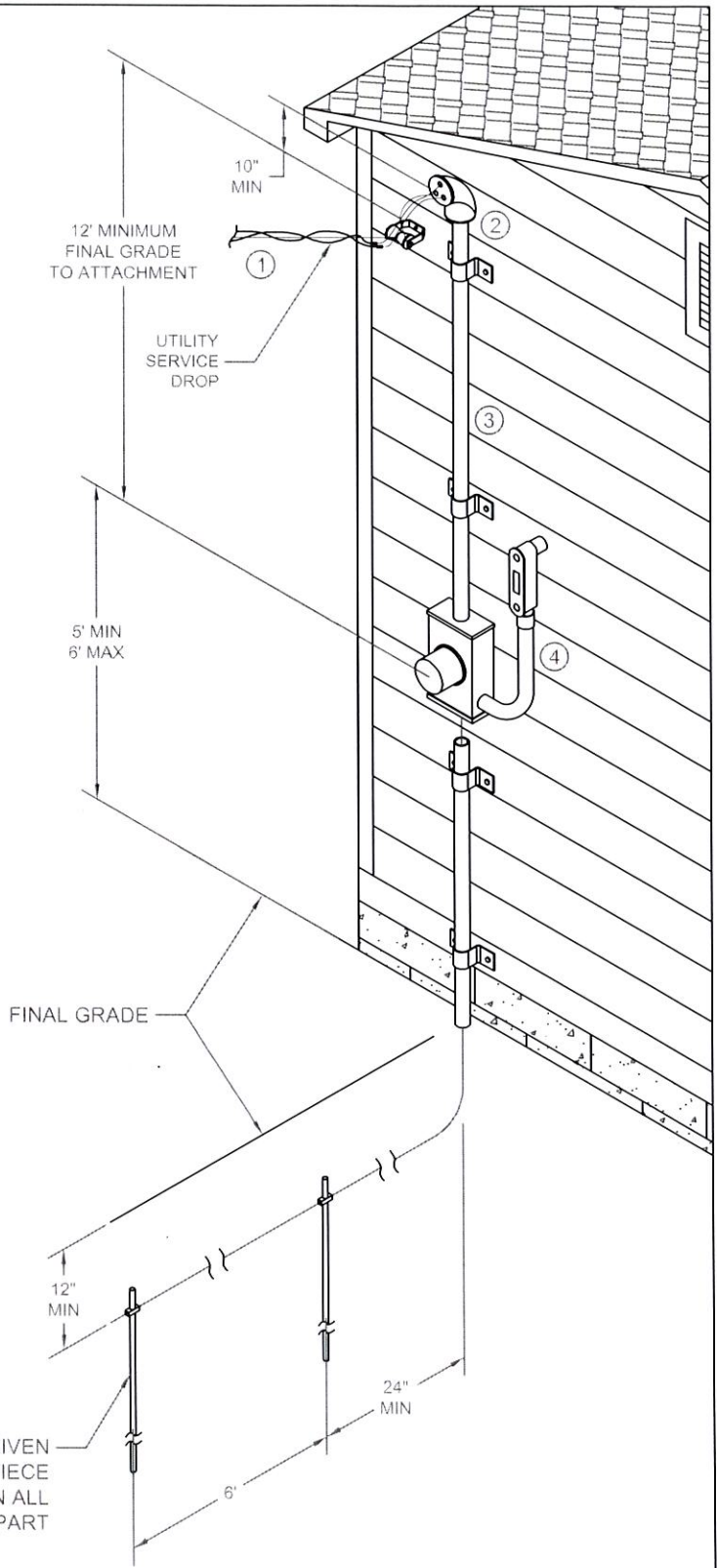
NOTE: MUST HAVE PERMANENT HEALTH DEPT. RELEASE AND PASSED ELECTRICAL INSPECTION.

- ① 12 FT. MINIMUM ABOVE WALKS
18 FT. MINIMUM ABOVE PUBLIC STREETS, ALLEYS, AND CULTIVATED, OR GRAZING AREAS
- ② POINT OF ATTACHMENT SHOULD NOT BE FARTHER THAN 2 FEET FROM THE WEATHERHEAD AND INSTALLED BY THE ELECTRICIAN TO ATTACH UTILITY SERVICE DROP.
- ③ MINIMUM CONDUIT SIZE
SEE TABLES 8-C, 8-E, 8-F

FOR SINGLE FAMILY DWELLINGS ONLY				
AMP	COPPER CONDUIT	ALUM. CONDUIT		
100	#4	1 1/4"	#2	1 1/4"
200	#2 / 0	1 1/2"	#4 / 0	2"

IF PVC IS USED, MUST BE SCHEDULE 80

- ④ GROUNDING ELECTRODE CONDUCTORS SHALL BE UNSPLICED AND HAVE 6" EXPOSED FOR THE INTERCONNECTION OF OTHER SYSTEMS. ELECTRICAL NON-METALLIC OR METAL CONDUIT SHALL BE USED FOR PROTECTION. IF METALLIC, BOND BOTH ENDS (SEE SECTION 4-1 & 3)



TWO APPROVED 8' DRIVEN GROUND RODS WITH ONE PIECE CLAMPS REQUIRED ON ALL SERVICES, 6' APART

Residential Service Overhead (Below Roof)

- 1) The member is responsible for all costs associated with the construction and material for the meter base and service mask.
- 2) SKRECC will attach a service drop to the service mask, make connections to members wire outside the weather head and install a SKRECC meter in the meter base.
- 3) Meter base must be on an exterior wall of the home and easily accessible.
- 4) The meter base must be mounted securely to the home at a height of 5 feet minimum and 6 feet max from ground level to meter socket.
- 5) The meter base must be grounded with two 8 feet ground rods connected with a continuous # 6 bare copper wire back to the meter grounding lug for 200AMP services. Note: use #4 bare Copper for 400AMP services.
- 6) Six inches of grounding conductor must be exposed below the meter base with a utility grounding block attached for use of the TV/Phone companies to ground too. The remainder of the grounding conductor must be enclosed in ½ inch schedule 80 conduit for protection to ground level. The schedule 80 conduit must be fastened to the exterior of the home with a minimum of two ½ inch approved straps.
- 7) The service mask must be constructed of 2-inch RMC or IMC at minimum. If PVC is used it must be schedule 80 and must be used in conjunction with a house knob for utility service drop connection. See specification drawing RSO-2 and RSO-3 for additional installation details.
- 8) The service mask conduit must be secured with a minimum of two through-the-wall bolts for every 10 feet section. The first through-the-wall bolt must be located within 12 inches from the meter base and the second through-the-wall bolt must be located 12 inches from the top of the conduit.
- 9) The service clamp must be located 10 inches below the weather head.
- 10) The minimum clearance from the service clamp to ground level must be 12 feet.
- 11) If joints of conduit are used to build the service mask, the service clamp cannot be connected to the service mask, in this case a house knob will need to be used as the point of attachment and must be located within 12 inches of the weather head.
- 12) Three insulated conductors sized in accordance with the required service size must have 24 inches hanging out of the weather head with the neutral conductor identifiable by white tape or other manufacturer markings.
- 13) Must have a passed yellow sticker "service inspection" from a licensed electrical inspector. Service stickers are good for 60 days to prepare for a final inspection.
- 14) The member is responsible for contacting a licensed electrical inspector approved for their area to set up a final inspection, the certificate of compliance must be brought to your local SKRECC office to change from Small Commercial rate to Residential, Farm and Non-Farm Service under Schedule A of SKRECC's published tariff.
- 15) See specification drawing RSO-2 and RSO-3 for additional installation details.

Note: Must have a passed service inspection from a licensed electrical inspector and permanent power release from the health department.



**MUST HAVE PERMANENT HEALTH DEPT. STICKER,
AND PASSED ELECTRICAL INSPECTION**

200A - 2 1/2" Conduit
400A - 3" Conduit

All conduit and weatherhead furnished by member. Conduit on pole and weatherhead installed by SKRECC

Conduit must be 5" away from pole

Install 1/4" nylon pull string from pole to meter base for South KY RECC's pull rope

WARNING TAPE
(Warning: Install tape in ditch 12" above underground installation)

FROM POLE TO METER BASE

Use PVC Schedule 80 18" elbows on secondary conduit

ALL CONDUIT ABOVE GRADE MUST BE SCHEDULE 80 ELECTRICAL PVC CONDUIT BELOW GRADE MAY BE SCHEDULE 40 ELECTRICAL PVC

6" of the grounding conductor shall be exposed for the connection of other systems

PVC Expansion Joint

5' min.
6' max.

TWO 8' DRIVEN GROUND RODS WITH ONE PIECE CLAMPS REQUIRED ON ALL SERVICES

First ground rod must be 2' away from foundation

6' APART

 SOUTH KENTUCKY RECC SOMERSET, KENTUCKY	UNDERGROUND SERVICE POLICY & SPECIFICATIONS		DATE 03/12/2024	DWG NO USP-1	REV 4

SPECIFICATIONS FOR UNDERGROUND ELECTRIC SERVICE

1. The meter base must be approved for underground electric service. Bolt-In type meter bases cannot be used.
2. The distance from the base of the transformer pole to the meter base shall not exceed 200 feet and be readily accessible.
3. The ditch shall be a minimum of 24-inches below finished ground level, and warning tape in the ditch must be placed 12-inches above the underground installation. SKRECC Engineering Department must inspect all ditches.
4. The member, developer, or electrical contractor shall dig, prepare, and fill the trench for the underground service.
5. The member, developer, or electrical contractor shall furnish and install all pipe, fittings (including weather-head), and a ¼-inch nylon pull rope sufficient to pull our rope through the conduit for the underground service (rope to be installed after the pipe is glued so that the nylon rope is free to pull).
6. Conduit shall be installed with no more than two 90-degree conduit elbows. These elbows shall be 18-inch schedule 80 PVC. If more bends are needed, special approval must be granted by South Kentucky RECC. If the conduit has been installed in a manner so that the wire cannot be pulled, it will be the responsibility of the member to reinstall the conduit at their expense. Do not use the center bottom knockout on the meter base. Care must be taken when the ditch is backfilled to prevent rocks and other potentially damaging elements from being in contact with the conduit.
7. The conduit shall be installed in the ditch and one 90-degree sweep elbow turned up in such a way so that there is a distance of 5-inches between the back of the pipe and the face of the pole. The pipe shall then be capped so that water, dirt, etc., cannot enter the pipe. Do not install the pipe on the pole. Leave three 10-foot lengths of conduit and a weather-head at the pole for South Kentucky RECC personnel to install on the pole.
8. All 200 amp underground services require one run of 2 ½-inch PVC electrical conduit. For 400 amp services, one run of 3-inch PVC conduit is required. Schedule 80 is required for all conduit above grade and schedule 40 is allowed below grade. No plumbing pipe or fittings can be used.
9. See specification drawing *USP-1* for additional installation details.



SUBJECT: Electrical Inspectors Listing

Adair County: This is an open county any electrical inspector can perform inspections in this county. The most prominent inspectors for this county are:

1. Chris Bennett (270-378-1036)
2. Pat Williams (270-699-6838)

Casey County: This is an open county any electrical inspector can perform inspections in this county. The most prominent inspectors for this county are:

1. Mike Adams (270-343-4505)
2. Ron Ebling (606-872-2621)
3. Chris Bennett (270-378-1036)
4. Pat Williams (270-699-6838)

Clinton County This county is closed to:

1. Jackie Spears (606-688-0152)

Cumberland County This county is closed to Tri-County Electric Cooperative (270-864-3871); however, county officials have stated that Ricky Sheffield (270-427-8373) can inspect within the SKRECC service territory in Cumberland County.

Laurel County This is an open county any electrical inspector can perform inspections in this county. The most prominent inspectors for this county are:

1. Todd Cobb (606-682-1857)

Lincoln County This county is closed to:

1. Mike Leger (859-893-4367)

McCreary County This county is closed to:

1. Ron Ebling (606-872-2621)
2. Larry Strunk (606-310-1300)

Pulaski County

This county is closed to:

1. Ron Ebling (606-872-2621)
2. Brett Williams (606-493-6515)
3. Larry Strunk (606-310-1300)

Rockcastle County

This is an open county any electrical inspector can perform inspections in this county. The most prominent inspector for this county is:

1. Dale Fortney (859-623-0516)
2. Wendell Fortney (606-493-9157)
3. Todd Cobb (606-682-1857)
4. Brett Williams (606-493-6515)
5. Donald Hacker (606-599-2138)

Russell County

This is an open county any electrical inspector can perform inspections in this county. The most prominent inspectors for this county are:

1. Mike Adams (270-858-9102)
2. Ron Ebling (606-872-2621)
3. Chris Bennett (270-378-1036)
4. Pat Williams (270-699-6838)
5. Jackie Spears (606-688-0152)
6. Coy Neat (270-849-5910)

Wayne County

This county is closed to:

1. Jackie Spears (606-688-0152)

If a member has concerns about an electrical inspection that has been performed for them we can refer the member to the State Electrical Inspector.

State Inspector

1. Mike Shannon (270-321-2787)

Tennessee has assigned inspectors for each county they are:

Pickett County Tennessee – Doug Manis (931-397-7441)

Scott County Tennessee – David Manis (865-256-4809)

The State of Tennessee has authorized the issuing of permits by local businesses in each county. South Kentucky RECC members needing an electrical inspection in Pickett County Tennessee can obtain their electrical inspection permit at:

Pickett Builders Supply
1113 Olympus Drive
Byrdstown, Tennessee 38549
Phone # 931-864-3156

South Kentucky members in Scott County Tenn. can obtain their electrical inspection permit at:

Plateau Electric Cooperative
1600 Scott Highway
Oneida, Tennessee 37841
Phone # 423-569-8591

Health Department Release Sticker Examples

PHPS-002 (5-98)

NOTICE OF
RELEASE FOR PERMANENT
ELECTRICAL SERVICE

Release / Application No. _____

Applicant Name _____

Applicant Phone # _____

Location _____

Health Department Signature _____

This release is *NOT* approval of the septic system. Place this on the electric meter base or electrical service panel. If you have questions about this release call your local health department at _____

PHPS-001 (5-98)

NOTICE OF
RELEASE FOR TEMPORARY
ELECTRICAL SERVICE

Release / Application No. _____

Applicant Name _____

Applicant Phone # _____

Location _____

Health Department Signature _____

This release is *NOT* approval of the septic system or proposed site. Place this on the electric meter base or electrical service panel. If you have questions about this release call your local health department at _____

Electrical Inspection Sticker Color Guideline

Rough In Inspection

Completed when home is initially wired, and walls are still exposed.

Service Only Inspection

“Good for 60 days”

SKRECC requires interior walls covered and the panel box made up prior to pulling permanent power to a residence.

Final Inspection

“Released for Occupancy”

